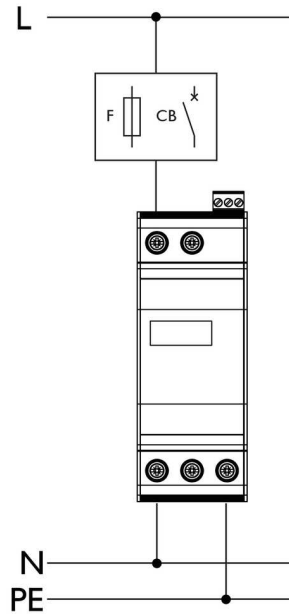


Install Manual

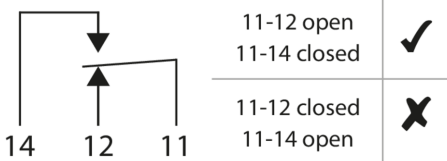
SD1-100-275



Installation



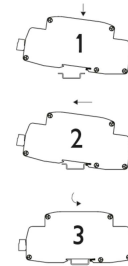
Alarm



Terminal Installation

Terminal Type		
min Capacity	2.5 mm ²	0.5 mm ²
max Capacity	16 mm ²	2.5 mm ²
Torque	2 Nm	0.6 Nm
Wire Stripping Length		

Mounting Information



Electrical Specifications

Connection type		Shunt
Modes of protection		L-N
Number of ports		1
Location		Indoor
Short circuit withstand level	I_{SSCR}	50kA
Maximum backup fuse		63A
Recommended SCB		SCB1-3-80
Earth leakage current	I_{PE}	N/A

Mechanical Specifications

Minimum operating temperature		-40°C
Maximum operating temperature		70°C
Minimum operating humidity		5%
Maximum operating humidity		95%
Mounting method		TS35 DIN Rail
Environmental rating		IP20

Optional Mounting Kit -M



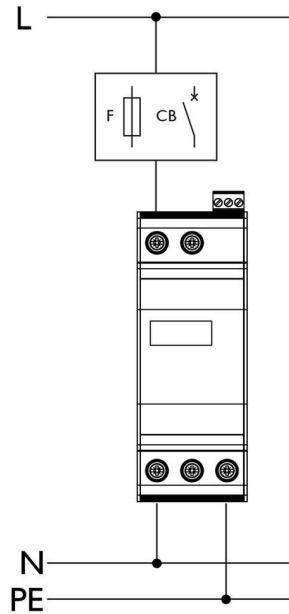
Wire entry holes should be cut by the installer on site to keep the wiring to the SD1 unit as short and straight as possible. Cable glands or grommets should be used to suit the environment and diameter of the wires utilised. Enclosure dimensions are shown in the product datasheet.

Install Manual

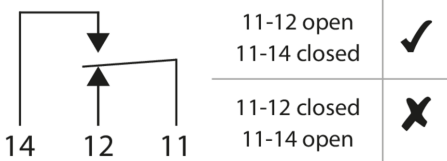
SD1-100-275-N



Installation



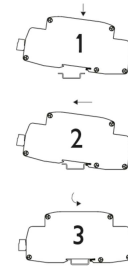
Alarm



Terminal Installation

Terminal Type		
min Capacity	2.5 mm ²	0.5 mm ²
max Capacity	16 mm ²	2.5 mm ²
Torque	2 Nm	0.6 Nm
Wire Stripping Length		

Mounting Information



Electrical Specifications

Connection type		Shunt
Modes of protection		L-N, N-PE
Number of ports		1
Location		Indoor
Short circuit withstand level	I_{SSCR}	50kA
Maximum backup fuse		63A
Recommended SCB		SCB1-3-80
Earth leakage current	I_{PE}	<10µA

Mechanical Specifications

Minimum operating temperature		-40°C
Maximum operating temperature		70°C
Minimum operating humidity		5%
Maximum operating humidity		95%
Mounting method		TS35 DIN Rail
Environmental rating		IP20

Optional Mounting Kit -M



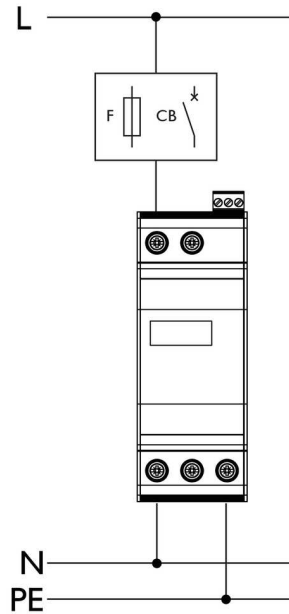
Wire entry holes should be cut by the installer on site to keep the wiring to the SD1 unit as short and straight as possible. Cable glands or grommets should be used to suit the environment and diameter of the wires utilised. Enclosure dimensions are shown in the product datasheet.

Install Manual

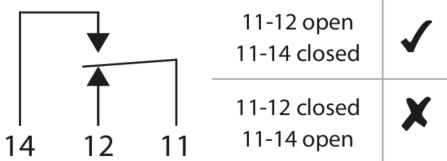
SD1-150-275



Installation



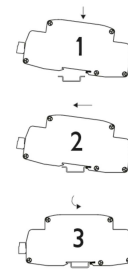
Alarm



Terminal Installation

Terminal Type		
min Capacity	2.5 mm ²	0.5 mm ²
max Capacity	16 mm ²	2.5 mm ²
Torque	2 Nm	0.6 Nm
Wire Stripping Length		

Mounting Information



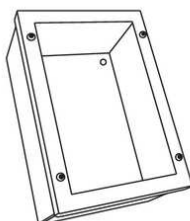
Electrical Specifications

Connection type		Shunt
Modes of protection		L-N
Number of ports		1
Location		Indoor
Short circuit withstand level	I_{SSCR}	50kA
Maximum backup fuse		80A
Recommended SCB		SCB1-3-25
Earth leakage current	I_{PE}	N/A

Mechanical Specifications

Minimum operating temperature		-40°C
Maximum operating temperature		70°C
Minimum operating humidity		5%
Maximum operating humidity		95%
Mounting method		TS35 DIN Rail
Environmental rating		IP20

Optional Mounting Kit -M



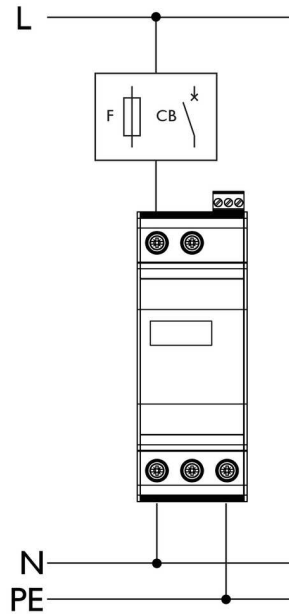
Wire entry holes should be cut by the installer on site to keep the wiring to the SD1 unit as short and straight as possible. Cable glands or grommets should be used to suit the environment and diameter of the wires utilised. Enclosure dimensions are shown in the product datasheet.

Install Manual

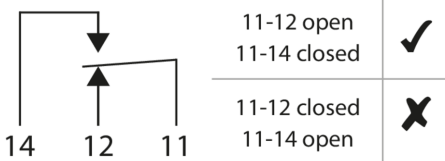
SD1-150-275-N



Installation



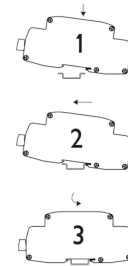
Alarm



Terminal Installation

Terminal Type		
min Capacity	2.5 mm ²	0.5 mm ²
max Capacity	16 mm ²	2.5 mm ²
Torque	2 Nm	0.6 Nm
Wire Stripping Length		

Mounting Information



Electrical Specifications

Connection type		Shunt
Modes of protection		L-N, N-PE
Number of ports		1
Location		Indoor
Short circuit withstand level	I_{SSCR}	50kA
Maximum backup fuse		80A
Recommended SCB		SCB1-3-25
Earth leakage current	I_{PE}	<10μA

Mechanical Specifications

Minimum operating temperature		-40°C
Maximum operating temperature		70°C
Minimum operating humidity		5%
Maximum operating humidity		95%
Mounting method		TS35 DIN Rail
Environmental rating		IP20

Optional Mounting Kit -M



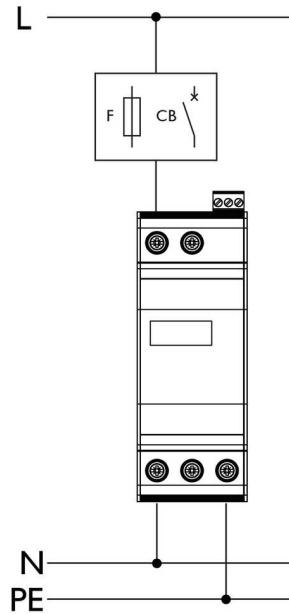
Wire entry holes should be cut by the installer on site to keep the wiring to the SD1 unit as short and straight as possible. Cable glands or grommets should be used to suit the environment and diameter of the wires utilised. Enclosure dimensions are shown in the product datasheet.

Install Manual

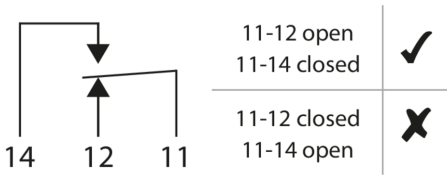
SD1-200-275



Installation



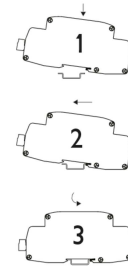
Alarm



Terminal Installation

Terminal Type		
min Capacity	2.5 mm ²	0.5 mm ²
max Capacity	16 mm ²	2.5 mm ²
Torque	2 Nm	0.6 Nm
Wire Stripping Length		

Mounting Information



Electrical Specifications

Connection type		Shunt
Modes of protection		L-N
Number of ports		1
Location		Indoor
Short circuit withstand level	I_{SSCR}	50kA
Maximum backup fuse		100A
Recommended SCB		SCB1-3-25
Earth leakage current	I_{PE}	N/A

Mechanical Specifications

Minimum operating temperature		-40°C
Maximum operating temperature		70°C
Minimum operating humidity		5%
Maximum operating humidity		95%
Mounting method		TS35 DIN Rail
Environmental rating		IP20

Optional Mounting Kit -M



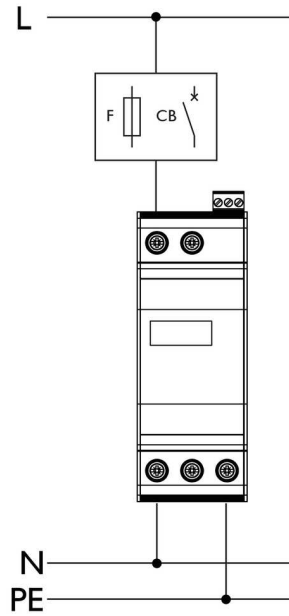
Wire entry holes should be cut by the installer on site to keep the wiring to the SD1 unit as short and straight as possible. Cable glands or grommets should be used to suit the environment and diameter of the wires utilised. Enclosure dimensions are shown in the product datasheet.

Install Manual

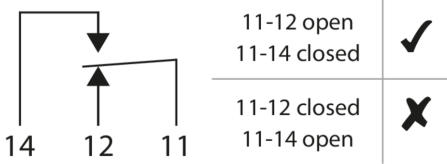
SD1-200-275-N



Installation



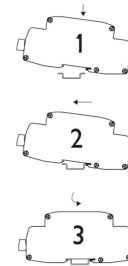
Alarm



Terminal Installation

Terminal Type		
min Capacity	2.5 mm ²	0.5 mm ²
max Capacity	16 mm ²	2.5 mm ²
Torque	2 Nm	0.6 Nm
Wire Stripping Length		

Mounting Information



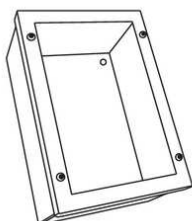
Electrical Specifications

Connection type		Shunt
Modes of protection		L-N, N-PE
Number of ports		1
Location		Indoor
Short circuit withstand level	I_{SSCR}	50kA
Maximum backup fuse		100A
Recommended SCB		SCB1-3-25
Earth leakage current	I_{PE}	<10μA

Mechanical Specifications

Minimum operating temperature		-40°C
Maximum operating temperature		70°C
Minimum operating humidity		5%
Maximum operating humidity		95%
Mounting method		TS35 DIN Rail
Environmental rating		IP20

Optional Mounting Kit -M



Wire entry holes should be cut by the installer on site to keep the wiring to the SD1 unit as short and straight as possible. Cable glands or grommets should be used to suit the environment and diameter of the wires utilised. Enclosure dimensions are shown in the product datasheet.